

UiPath RPA Developer Associate

1. The interaction between UiPath Studio and the UiPath Robot Service performs which of the following functions?

A. Process version control (git SVN etc.)

B. Sends the heartbeat and logs

C. Executes or debugs a process

D. triggers unattended processes

Answer(s): C

2. Which of the following models are available in UiPath AI Center for UiPath Automation Suite?

A. Models built by independent freelance developers

B. Models built by third-party integration platforms from UiPath Marketplace

C. Models built by in-house data scientists

D. Models built by non-tech industry professionals

Answer(s): B

3. Which are the 2 types of accounts available in UiPath Automation Cloud?

A. Person Robot

B. Named user. User

C. User Group

D. User Robot

Answer(s): B D

4. What is the purpose of using a standard business process model and notations when creating a high-level solution design?

A. To show the sequence of steps in the solution without focusing on details

B. To ensure consistency and understanding across different process diagrams

C. To reduce the time spent on designing the solution by using obvious symbols

D. To make the diagrams visually appealing and engaging for stakeholders

Answer(s): B

5. Invoices from various clients require processing Why would the "Unique Key" properly be used in the Orchestrator Queue configuration?

A. To uniquely identify the queue in Orchestrator

B. To display processed invoices in a report

C. To ensure that each invoice is only processed once and to avoid duplication

D. To prioritize the processing of specific queue items over others

Answer(s): C

6. What is the purpose of the "Resumed" process status in UiPath Action Center?

A. It signals the completion of an intermediary process or the addition of Human input

B. It represents a paused process awaiting further instructions

C. It signals that the process is successfully completed

D. It indicates the process is terminated

Answer(s): A

7. What type of applications can be built using UiPath Apps?

A. Application focused on Integrating and managing UiPath RPA automations

B. Applications primarily targeting data analyse and machine learning

C. Simple applications with base user interaction and limited functionality

D. Custom business applications tor data access and complex business log*:

Answer(s): D

8. Which of the following is listed under the use cases of AI Center for handling unstructured data?

A. Image Classification

B. Inventory Forecasts

C. Language Translation

D. Loan Defaults

Answer(s): A

9. Which of the Mowing can be achieved by using Automaton Ops?

A. Define the licensing availability and strategy

B. Perform remote installations of UiPath products (Such as Studio Assistant)

C. Configure connection between different products inside the UiPath ecosystem

D. Configure and deploy governance policies

Answer(s): D

10. Which UiPath Task Mining integrator allows for documented tasks to be exported as automation ideas?

A. Integration with UiPath Orchestrator

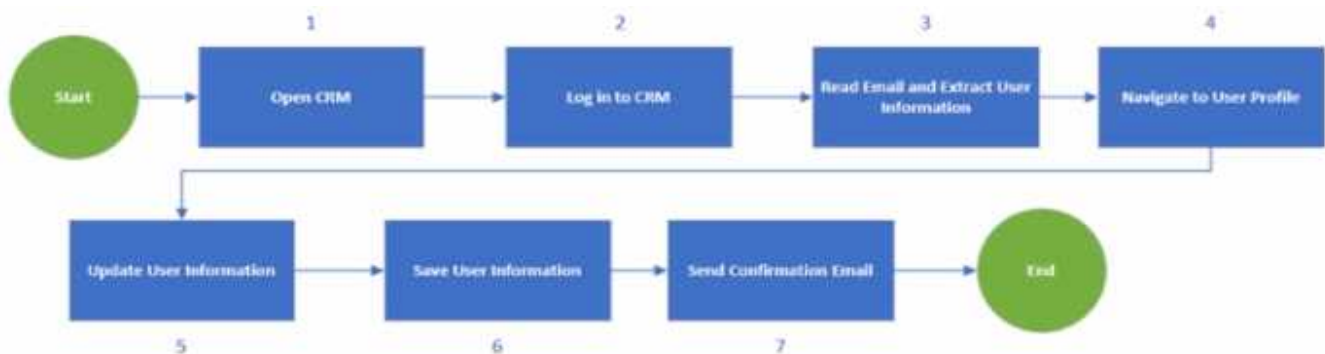
B. integration with UiPath Assistant

C. Integration with UiPath Automation Hub

D. Integration with UiPath Process Mining

Answer(s): C

11. Given the following diagram how on the process be optimized from the steps perspective?



A. Read the email as a first step and open CRM and log in only if there's an email.

B. Do not send a confirmation email as part of this process

C. Navigate to the User Profile directly after the login

D. Log out from CRM before login so the environment is ready for automation

Answer(s): A

12. What argument types can be used for a workflow that is invoked with the "Isolated" option?

A. Simple types

B. Reference types

C. Serializable types

D. Class types

Answer(s): C

13. What are two key indicators in estimating the development time for process development?

A. Number of items to be processed and experience of developers

B. Number of users who will use the process and number of applications to be automated

C. Correctness of documentation and triggers scheduling strategy

D. Number of actions to be automated and complexity of architecture

Answer(s): D

14. Deal guidance is a machine learning application of which industry?

A. Financial services

B. Healthcare

C. Professional services

D. Retail

Answer(s): A

15. What is a requirement to access Automation Cloud?

A. Need a dedicated infrastructure

B. Need a compatible browser

C. Need to install on-premises

D. Need an offline access

Answer(s): B

16. What is the recommended UiPath Studio template to be used for long-running workflows?

A. Robotic Enterprise Framework (ReFramework).

B. Attended Automation Framework

C. No framework is needed

D. Orchestration Process Template

Answer(s): D

17. What is a layer that is redundant for a Solution Architect to take into account when designing the Reusable Components for a project?

A. Logic layer

B. Persistence layer (saving data)

C. Process steps that are not part of the User Interface interaction layer or the Logic layer or the Persistence layer

D. User interface interaction layer (interact with applications)

Answer(s): C

18. How does scalability impact the design of a UiPath automaton flowchart and what strategies can ensure it handles increased process volume?

A. Scalability primarily focuses on reducing the number of steps in the flowchart to make it more efficient for smaller-scale processes

B. To achieve scalability flowchart design should be rigid and not allow for changes or adaptations to the process response to evolving business needs.

C. Scalability is crucial in high-level flowchart design to handle larger volumes efficiently involving design adjustments and resource optimization if needed

D. Scalability is irrelevant in high-level flowchart design, as it is solely a concern for the deployment phase

Answer(s): C

19. Which feature of UiPath Apps allows a user to create forms and components for user interfaces in applications?

A. UiPath Studio

B. UiPath Orchestrator

C. Data Service

D. App Builder

Answer(s): D

20. What is the main difference between the deployment models for UiPath products?

A. How the product is managed from an IT infrastructure point of view.

B. The level of infrastructure integration between UiPath products.

C. The types of processes that can be automated using the products.

D. How each product is licensed and billed

Answer(s): A
