

HP Enterprise Solutions

1. Refer to the exhibit.

You are configuring a new HPE array and verifying properties of a set of volumes. Which RAID level is used on the VMwareDatastores-GF volume?

- A. RAID 0
- B. RAID 6
- C. Triple Parity+
- D. RAID 5

Answer(s): D

2. You have proposed that a customer replace their legacy SAN switches with new ?-Series switches. They are concerned about the management of all the devices, so you have included SANnav in the proposal. What are the benefits of SANnav that you should emphasize to this customer? (Choose two.)

- A. It runs in a dedicated JVM
- B. It offers automated SPOCK validation
- C. It runs in a browser
- D. It provides a global View
- E. It provides fine-grain visibility into Storage Fabrics (FC + Ethernet)

Answer(s): C D

3. A customer has completely virtualized their datacenter with VMware. You propose a SimpliVity solution to replace their aging hardware. Which SimpliVity features should you emphasize in your presentation? (Choose two.)

A. It uses native hypervisor management tools for management

B. It utilizes the Storage Management Utility for management and monitoring

C. It utilizes a unified ASIC for performance

D. It includes deduplication and backup capabilities

E. It provides S3 file access

Answer(s): B D

4. You want to deploy Recovery Manager Central to a customer environment.
How can you accomplish this? (Choose two.)

A. Install RMC on top of the virtual or physical RHEL system using the GUI wizard

B. Deploy an RMC virtual appliance to Microsoft Hyper-V hypervisor

C. Deploy RMC on top of the virtual CentOS system using the CLI

D. Deploy RMC on top of the virtual CentOS system using the GUI wizard

E. Install RMC on the top of the virtual or physical RHEL system using the CLI

F. Deploy an RMC virtual appliance to VMware ESXi hypervisor

Answer(s): B F

5. A customer uses Veeam to backup their entire datacenter.
Which Veeam feature allows them to recover a single email from their Exchange server?

A. Changed block tracking

B. Explorer for Storage Snapshots

C. Data Mover Service

D. SureBackup

Answer(s): B

6. Refer to the exhibit.



You are designing a new Primera solution and demonstrating performance numbers to the customer. The customer reviews the configuration and requests a change to the configuration that will increase Random Write IOPS.

Which action will satisfy the customer request?

- A. Add more disks of smaller capacity
- B. Upgrade the HPE Primera base model
- C. Change to larger SSDs
- D. Add more FC Ports

Answer(s): C

7. Which of the following are part of the SimpliVity Data Virtualization Platform architecture? (Choose two.)

- A. Presentation Layer
- B. User Management Layer
- C. Security Layer
- D. Data Management Layer

Answer(s): A D

8. A customer is implementing a new high performance database environment.

What type of storage should you recommend?

- A. scale-out storage
- B. object store
- C. system-defined storage
- D. network-attached storage

Answer(s): A

9. You are designing a new enterprise array solution. The customer is interested in a caching tier that provides extremely low-latency and persistent storage at the same time. They also need to support more

than 500GB.

Which technology should you recommend?

- A. DRAM
- B. SRAM
- C. NVMe SCM
- D. NAND SSD

Answer(s): D

10. A customer is implementing an SAP HANA environment and is looking for an alternative to an entirely in-memory database.

Which storage technology should you recommend?

- A. SAS SSD
- B. NVMe SSD
- C. NVMe SCM
- D. Intel Optane

Answer(s): D

11. HOTSPOT (Drag and Drop is not supported)

You need to create an N:M relationship between VMware hypervisors and virtual volumes with the least amount of administrative overhead.

Click the option where you can create a group of VMware hypervisors for volumes provisioning.

Primerica & 3PAR SSMC

GENERAL	BLOCK PERSONA	STORAGE OPTIMIZATION	DATA PROTECTION	STORAGE SYSTEMS	SYSTEM REPORTER	SECURITY
Dashboard	Hosts	Priority Optimization	RMC Instances	Systems	Reports	Users
Activity	Host Sets			Controller Nodes	Threshold Alerts	LDAP
Schedules	Virtual Volumes			Ports	Advanced Analytics	
Settings	App Volume Sets			Drive Enclosures		
	Common Provisioning Groups			Physical Drives		
	Policies					

Name	SDP	Compaction Type	9.4.1 Base
HDP_datastore	SDP1	Type	Thin
HDP_datastore.r	SDP2-Alex-Gonzalez	Provisioning	Yes
ME-Demo-AutoCPG	SDP1	Dedup	Yes
ME-Demo-AutoCPG.r	SDP2-Alex-Gonzalez	Compression Mode	Read/Write
ME-Demo.0	SDP1	RAID	RAID 6
ME-Demo.1	SDP1	Adaptive optimization	-
test.1	SDP1	CPG	SSD r6
test.2	SDP1	Copy CPG	SSD r6
test.3	SDP1	Comments	-
test_IFM	SDP1	Virtual Machines	0
test_IFM_clone	SDP1	App Volume Set	-
test_k	SDP1		

- A. See Explanation section for answer.

Answer(s): A

12. Which tool is used to determine current compaction ratios on Primera arrays?

A. WebUI

B. Storage Management Utility (SMU)

C. NinjaStars

D. SSMC System Reporter

Answer(s): D

13. A customer wants to make a full copy replica of a database to use for performance testing. Which technology should they use to create the copy?

A. deduplication

B. snapshot

C. clone

D. synthetic full

Answer(s): B

14. A customer implemented the HPE StoreEver MSL6480 Tape Library. Which HPE Software can the system administrator use to check the health of the library and monitor its utilization?

A. OneView

B. StoreServe TapeAssure Advanced

C. StoreEver Data Verification

D. InfoSight

Answer(s): B

15. A customer environment includes:
10 DL380 Gen8 servers in a VMware Cluster
2 MSA storage arrays
2 8GB b-series fibre channel switches

The customer needs to replace their environment because it is end of life. They have limited budget. The customer is primarily concerned with management because they have limited IT staff, and they want to move away from fibre channel.

Which HPE Storage should you recommend?

A. HPE Primera

B. HPE XP8

C. HPE Nimble dHCI

D. HPE StoreOnce

Answer(s): A

16. You are designing an HPE MSA iSCSI for a customer. Which components are typically part of the solution? (Choose two.)

A. Drives

B. SFPs

C. Service Processor

D. All-inclusive Multi-system software

E. Switch zones

Answer(s): A B

17. A customer is planning to upgrade their HF40 controllers to support additional I/O requirements. To which model can they upgrade to meet their new requirements?

A. AF60

B. AF40

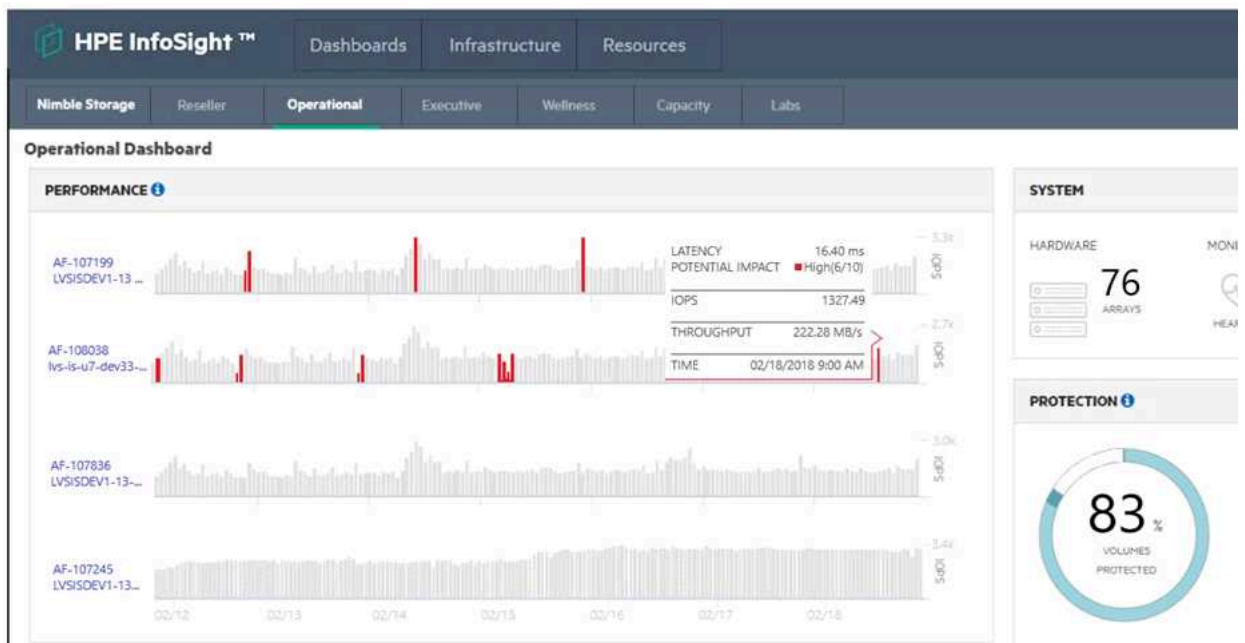
C. HF60

D. HF40C

Answer(s): D

18. HOTSPOT (Drag and Drop is not supported)

A customer has a Nimble HF40 and needs to create a support ticket. Click the option in the InfoSight portal where the customer can perform this task.



A. See Explanation section for answer.

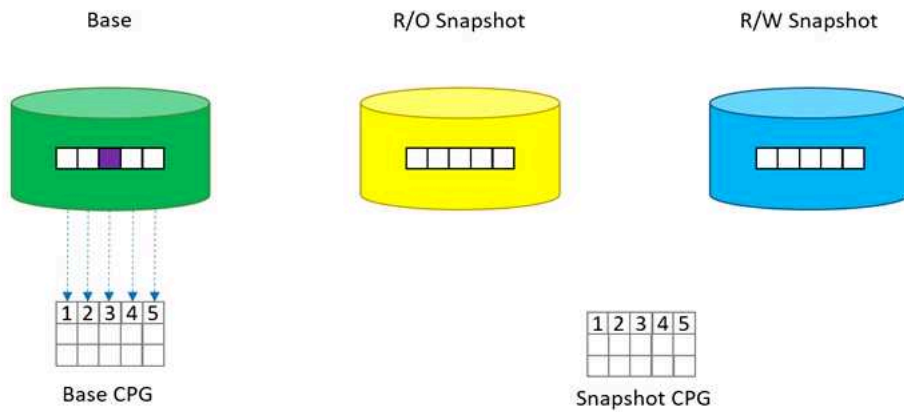
Answer(s): A

19. A customer is planning to replace their existing LTO-6 tape library with a new HPE StoreEver MSL2024 tape library. They want to reuse their existing LTO-6 tape cartridges for reads and writes. What is the latest tape drive technology that will provide backward compatibility?

- A. LTO8
- B. LTO5
- C. LTO6
- D. LTO7

Answer(s): D

20. DRAG DROP (Drag and Drop is not supported)
Refer to the exhibit.



You create two snapshots of a thin provisioned base volume in an HPE Primera. One snapshot is read only and the other is read-write. A write occurs at the location shown in in the diagram. Place the actions on the left into the order they are taken on the right.

Action

Order

- Copy block to snapshot CPG
- Redirect the snapshots
- Update the block with new data



A. See Explanation section for answer.

Answer(s): A