

# Alcatel-Lucent Interior Routing Protocols and High Availability

1. When a router receives an IP packet, but does not find a match in the routing table for the destination IP address, what actions are performed by the router?

A. The packet is flooded out all router interfaces.

B. The packet is dropped and an ICMP unreachable message is sent back to the source.

C. The packet is silently discarded.

D. The packet is flooded out all interfaces and an ICMP unreachable message is sent.

**Answer(s): B**

---

2. In IS-IS database synchronization, each router compares each LSP described in the received CSNPs with the LSPs in its own database. Which of the following actions is taken if the database contains a newer copy of the LSP?

A. The router sends a copy of the LSP from its database to its neighbor

B. The router sends a PSNP to its neighbor describing the LSP in its database.

C. The router updates its database with the LSP and floods a copy to its other neighbors.

D. The router sends a PSNP to its neighbor to request the LSP.

**Answer(s): A**

---

3. How many databases does a Link State routing protocol use?

A. One

B. Two

C. Three

D. Four

**Answer(s): C**

---

4. Which of the following statements regarding distance vectors protocols are true?  
(Choose two answers).

A. RIPv1, RIPv2, and BGP are distance vector protocols.

B. OSPF and IS-IS are distance vector protocols.

C. Routing tables are exchanged between neighbors; however, no routing table is transmitted beyond the immediate neighbor.

D. Distance vector protocols use the Dijkstra SPF algorithm.

E. Routers that participate in distance vector routing protocols maintain full knowledge of distant routers and how they interconnect

**Answer(s): A C**

---

5. In an IP datagram, which field identifies the receiving application

A. The protocol field of the transport layer header

B. The port field of the transport layer header

C. The protocol field of the network layer header

D. The port field of the network layer address

**Answer(s): B**

6. What is the primary purpose of classless interdomain routing (CIDR)?

A. To support classful routing protocols.

B. To allow IP routes to be defined using any number of bits for the network portion of the address.

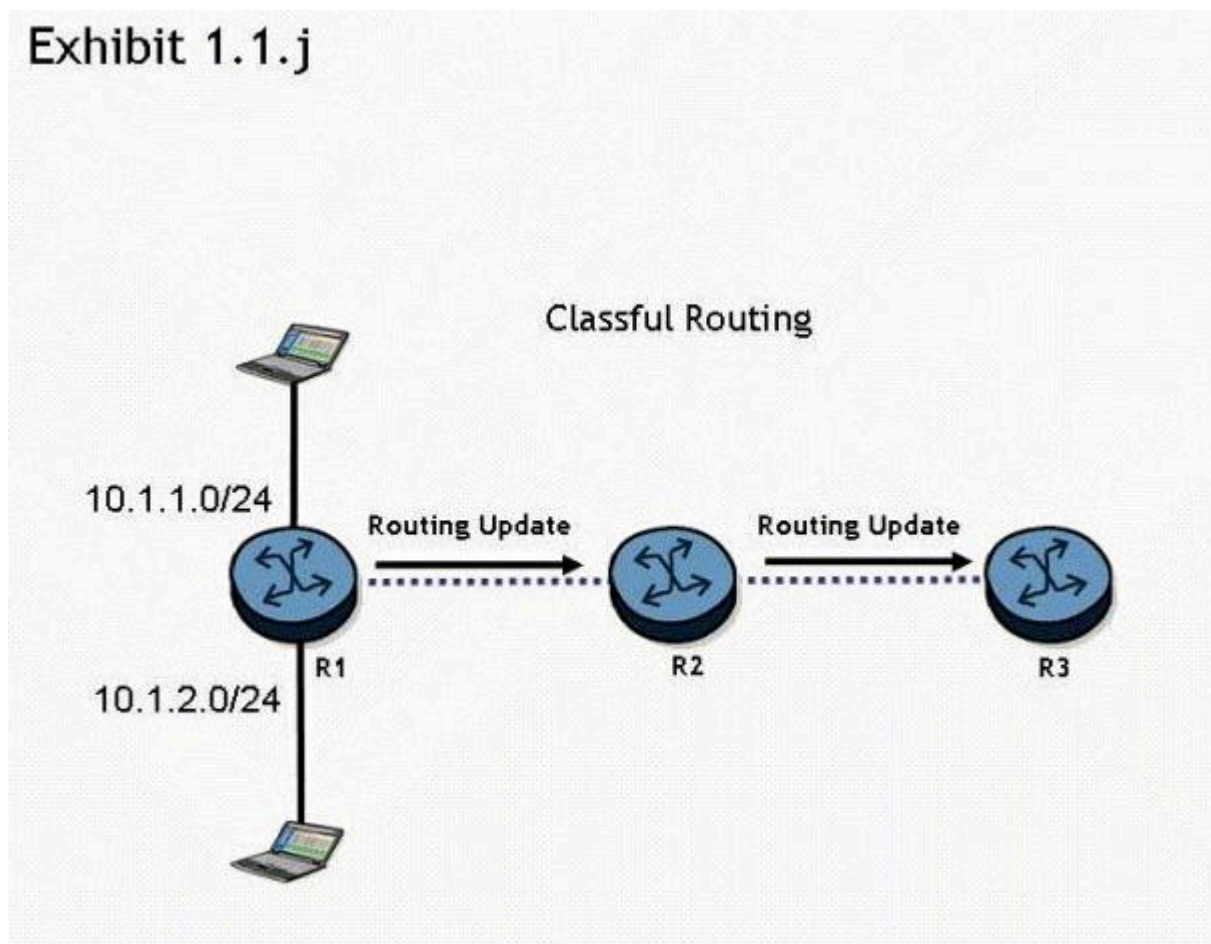
C. To allow interdomain routing between an IGP and EGP such as OSPF and BGP.

D. To simplify the allocation of IP address space by defining a fixed size for the network portion of the address for each of the address classes.

Answer(s): B

7. Click the exhibit button.

### Exhibit 1.1.j



Routers R1, R2, and R3 are running a classful routing protocol between them. Assuming that router R1 advertises all directly connected networks, how will these networks be represented in router R3's routing table?

A. Router R3's routing table can only contain one of the routes, which will result in route flapping.

B. Router R3's routing table will have one entry for 10.1.1.0/24 and one entry for 10.1.2.0/24.

C. The networks will be represented with one entry of 10.0.0.0/8 in router R3's routing table.

D. The networks will be represented with one entry of 10.0.0.0/24 in router R3's route table.

**Answer(s): C**

---

8. A static route is created using the command "static-route 0.0.0.0/0 next-hop 3.3.3.1". What command could be used to test the static route on an Alcatel-Lucent 7750 SR?

A. Ping static 3.3.3.1

B. Ping static 0.0.0.0/0

C. Ping 3.3.3.1

D. Ping 0.0.0.0

**Answer(s): C**

---

9. What is the source IP address in an OSPF update?

A. 224.0.0.5

B. 224.0.0.6

C. The unicast IP address of the interface the update is sent on

D. The system address of the router.

**Answer(s): C**

---

10. In an IP datagram, which of the following fields identifies the receiving application?

A. The protocol field of the transport layer header.

B. The port field of the transport layer header.

C. The protocol field of the network layer header.

D. The port field of the network layer address.

**Answer(s): B**

---

**11.** A static route is created using the command "static-route 2.3.4.0/24 next-hop 1.2.3.4". What is the correct traceroute command to test this static route on an Alcatel-Lucent 7750 SR?

A. traceroute 2.3.4.1

B. traceroute 2.3.4.0/24 next-hop 1.2.3.4

C. traceroute next-hop 1.2.3.4

D. traceroute does not work on the Alcatel-Lucent 7750 SR

**Answer(s): A**

---

**12.** Static routing will be used in a network between a corporate head office, with many connected networks, and a branch office, with one connection to the head office. Which of the following best describes the likely configuration?

A. The corporate head office router will have a default route and the branch site will have a more specific static route.

B. The corporate head office router and the branch office router will both have specific static routes.

C. The corporate head office router and the branch router will both have default routes.

D. The corporate head office router will have a more specific static route and the branch office router will have a default route.

**Answer(s): D**

---

**13.** Which one of the commands below will create a static route to network 2.3.4.0/24 on the AlcatelLucent 7750 SR router?

A. Static route 2.3.4.0 255.255.255.0 next hop 3.4.5.6

B. Static-route next-hop 3.4.5.6 2.3.4.0/24

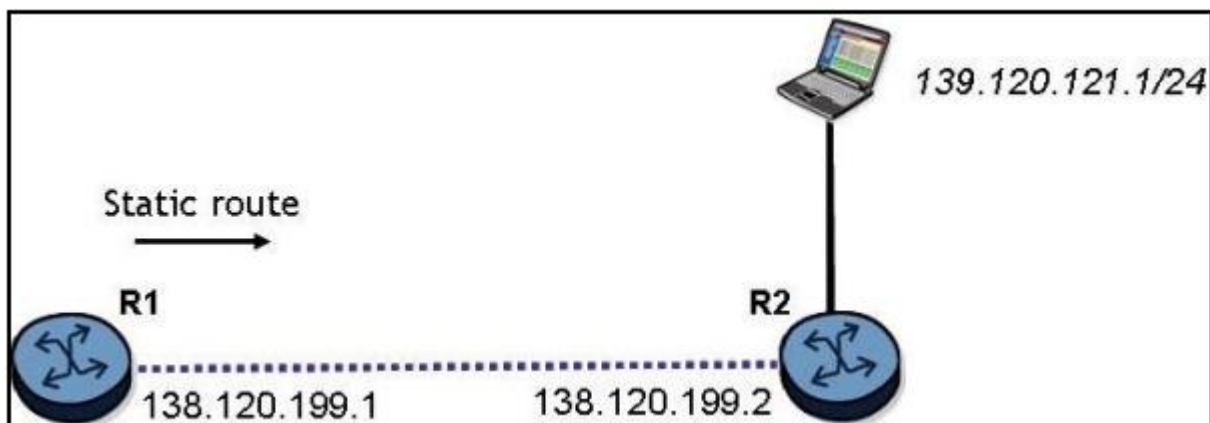
C. Static route 2.3.4.0/24 next hop 3.4.5.6

D. Static-route 2.3.4.0/24 next-hop 3.4.5.6

**Answer(s): D**

---

**14.** Click the exhibit button.



What is the command to configure a static route on the Alcatel-Lucent 7750 SR router R1 to reach the network behind router R2?

A. configure router static-route 139.120.121.0/24 next-hop 138.120.199.2

B. configure router static-route 139.120.121.0/24 next-hop 138.120.199.1

C. configure router static-route 138.120.199.2/24 next-hop 138.120.199.1

D. configure router static-route 139.120.121.0/24 next-hop 139.120.121.2

**Answer(s): A**

---

15. A default route for a client is also known as the:

A. Default path

B. Default gateway

C. Gateway path

D. Proxy ARP

**Answer(s): B**

---

16. How are LSPs acknowledged on IS-IS broadcast links?

A. The LSP is acknowledged by sending a PSNP PDU.

B. The LSP is acknowledged by sending an LSP PDU.

C. The LSP is acknowledged by sending a Hello PDU.

D. LSP are not acknowledged on broadcast links. The DIS sends periodic CSNPs to maintain database synchronization

**Answer(s): D**

---

17. There is an IP host with IP address 10.2.3.1. A static route is created, using the "configure router static-route 10.2.3.0/24 next-hop 10.1.2.1" command. What is the correct traceroute command to test this static route on an Alcatel-Lucent 7750 SR?

A. traceroute 10.2.3.1

B. traceroute 10.2.3.1 next-hop 10.1.2.1

C. traceroute next-hop 10.1.2.1

D. traceroute does not work on the Alcatel-Lucent 7750 SR.

E. traceroute 10.1.2.1

**Answer(s):** A

---

**18.** What is the default preference value for a static route in the Alcatel-Lucent 7750 SR router?

A. 0

B. 5

C. 10

D. 15

**Answer(s):** B

---

**19.** Which of the following are types of routers in an IS-IS topology? Choose three answers

A. Level 0

B. Level 1

C. Level 2

D. Level 0/1

E. Level 1/2

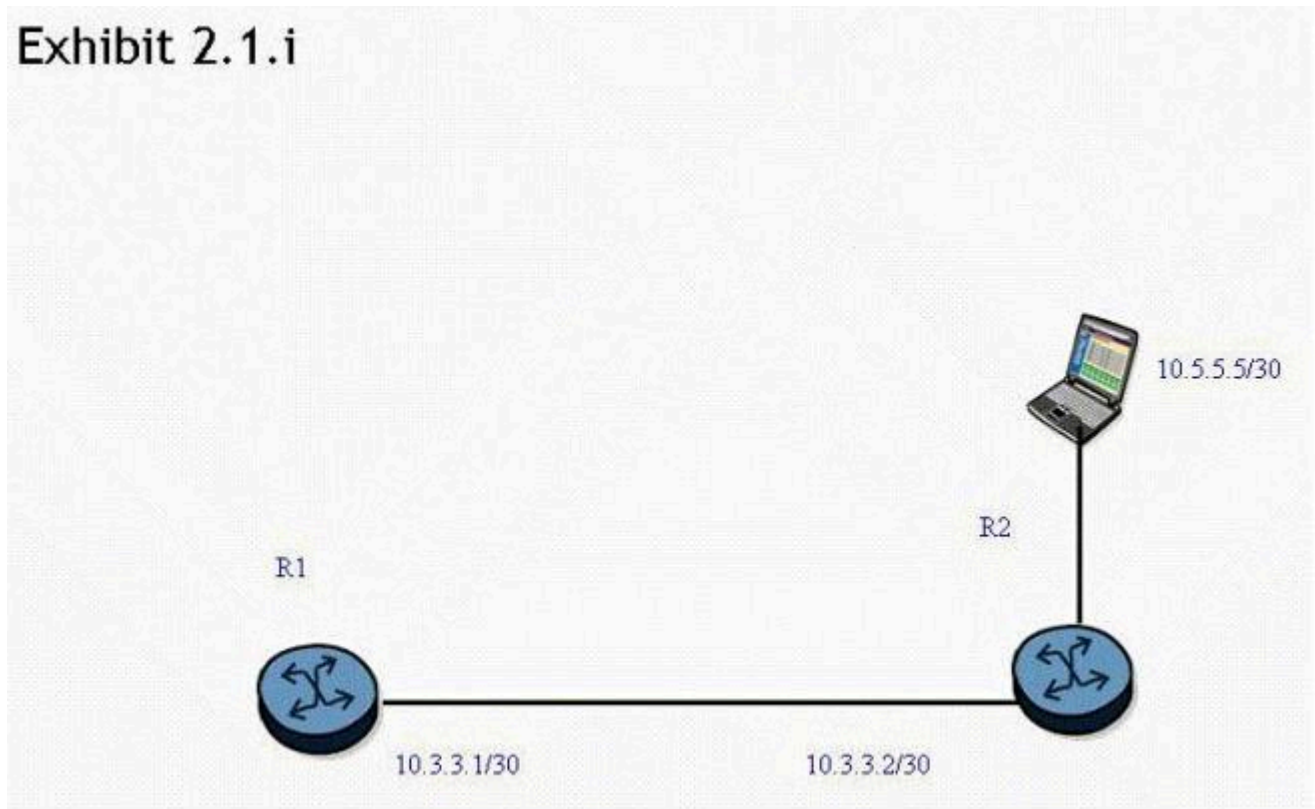
**Answer(s):** B C E

---



20. Click the exhibit button.

## Exhibit 2.1.i



A static route is created on router R1 „ using the "static-route 0.0.0.0/0 next-hop 10.3.3.2" command. What command can be used to test the static route on an Alcatel-Lucent 7750 SR?

A. ping static 10.5.5.5

B. ping static 0.0.0.0/0

C. ping 10.5.5.5

D. ping 0.0.0.0

**Answer(s): C**

---