

Appian Certified Senior Developer

1. You are facing issues when attempting to establish a SAML connection to an identity provider. You determine you need to increase the authentication-specific logging levels so that you can view trace level statements about the connection attempt in the application server log.

Which property file should you update to modify the log output level? (Choose the best answer.)

A. commons-logging.properties

B. appian_log4j.properties

C. logging.properties

D. custom.properties

Answer(s): B

2. When creating a Web API, which two items are configured in the Administration Console? (Choose two.)

A. LDAP Authentication

B. API Key

C. Connected System

D. Service Account

Answer(s): B D

3. Using a View, you pull a report on different employee transactions. You receive the following error: "a!queryEntity: An error occurred while retrieving the data." What is the most likely root cause? (Choose the best answer.)

A. The view contains a large number of rows, requiring more time to fetch the data.

B. The view doesn't have a column mapped as a Primary Key in its corresponding CDT.

C. The required inputs were not provided.

D. The rule contains a missing syntax.

Answer(s): A

4. During the design review, you identified slow-operating expression rules querying a specific data store. Which metric from the data_store_details.csv file will help you understand the "number of operations against data store?" (Choose the best answer.)

A. Transform Count

B. Query Count

C. Total Count

D. Execute Count

Answer(s): C

5. You have configured a process model to send an email to one or more recipients using the out-of-the-box Send E-Mail node.

Executing the process model results in the Send E-Mail node encountered this error: "Error:Email could not be sent".

Where do you go first to find more details on why the node encountered an error? (Choose the best answer.)

A. Raise a support case within My Appian so a cloud engineer can investigate.

B. Review the system.csv log.

C. Run and review the Health Check report

D. Investigate the application server stdout log

Answer(s): D

6. Which review format is the most efficient way to coach team members and improve code quality? (Choose the best answer.)

A. Peer Dev Review

B. Automated Code Scanning

C. Retrospectives

D. User Acceptance Testing

Answer(s): A

7. A lead designer receives this requirement:

Every time a record is modified, the data changed must be stored for audit.

Which design is the most efficient and has the least impact on the Appian application? (Choose the best answer.)

A. Create a custom plugin that can write an audit trail to a log file.

B. Create a trigger on the database table to capture the audit trail to a table.

C. Create an Appian process to capture the change history and write the audit trail to the database.

D. Create a web API call to an audit history system and write the audit trail to file.

Answer(s): B

8. You are creating an ERD that models the data for a college and includes a Many-to-Many relationship, Student-to-Class, where a student can be enrolled in multiple classes, and a class can enroll multiple students.

How can you handle this relationship so that it can be supported in Appian and remain in at least First Normal Form? (Choose the best answer.)

A. A joining table can be used to hold instances of Student/Class relationships.

B. The Student table should have a Class field to hold an array of Class IDs.

C. The Class table should have a Student field to hold an array of Student IDs.

D. It cannot be done, because Appian CDTs cannot handle Many-to Many relationships.

Answer(s): A

9. You need to show joined data from 5 tables. Each table contains a large number of rows and could generate a large result set after executing the Joins. The business is not expecting live data, and a 2-hour refresh is acceptable. Performance is a top priority. What should you use? (Choose the best answer.)

A. Table

B. View

C. Stored procedure

D. Materialized view

Answer(s): D

10. You are creating a table to store book information for a library. The book has a reference number (ISBN_ID), as well as a unique identifier (BOOK_ID). For the CDT to be created, which data type should you choose for the BOOK_ID? (Choose the best answer.)

A. Number (Integer)

B. Number (Decimal)

C. Date

D. Boolean

Answer(s): A

11. There is a need to relate two entities in the data structure: Employee and Skill. Employees can have multiple skills, and a single skill can relate to multiple employees. What kind of relationship would these entities have, and what is the minimum number of tables required to implement the design, according to Appian best practices? (Choose the best answer.)

A. One-to-many; 2 tables

B. Many-to-many; 2 tables

C. Many-to-one; 2 tables

D. Many-to-many; 3 tables

Answer(s): D

12. Your table contains several indexes. Which two statements regarding indexes are correct? (Choose two.)

A. Indexes increase the performance of Read operations.

B. Indexes increase the performance of Write operations.

C. Indexes decrease the performance of Write operations.

D. Indexes decrease the performance of Read operations.

Answer(s): A C

13. During a sprint retrospective meeting, you need to get the team thinking about the outcomes of the last sprint.

Which two basic questions should you ask? (Choose two.)

A. What didn't go well and can be improved?

B. What are the blockers?

C. Who did well in this sprint?

D. What went well?

Answer(s): A D

14. In Scrum, who is the right person responsible for prioritizing product backlog? (Choose the best answer.)

A. Tester

B. Product Owner

C. Lead Developer

D. Product Manager

Answer(s): B

15. You want to generate an email body which varies from one Appian environment to another. For instance, between DEV and TEST.

According to Appian best practices, how should you define the environment name? (Choose the best answer.)

A. Create an expression rule and update its value post-deployment.

B. Create an environment-specific constant.

C. Create a constant and update its value post-deployment.

D. Create a stored procedure.

Answer(s): B

16. Which XSD element is NOT supported within an Appian CDT? (Choose the best answer.)

A.

B.

C.

D.

Answer(s): B

17. While deploying a package to a target environment, object security warnings were detected. In which two places can object security settings be changed in bulk? (Choose two.)

A. Application security summary

B. Administration Console

C. Compare and Deploy tool

D. Process model folder

Answer(s): A C

18. More than one user is editing the same record in database. With XSD, how do you avoid the collision of data from Application? (Choose the best answer.)

A. @Version

B. @OrderBy

C. @inheritance

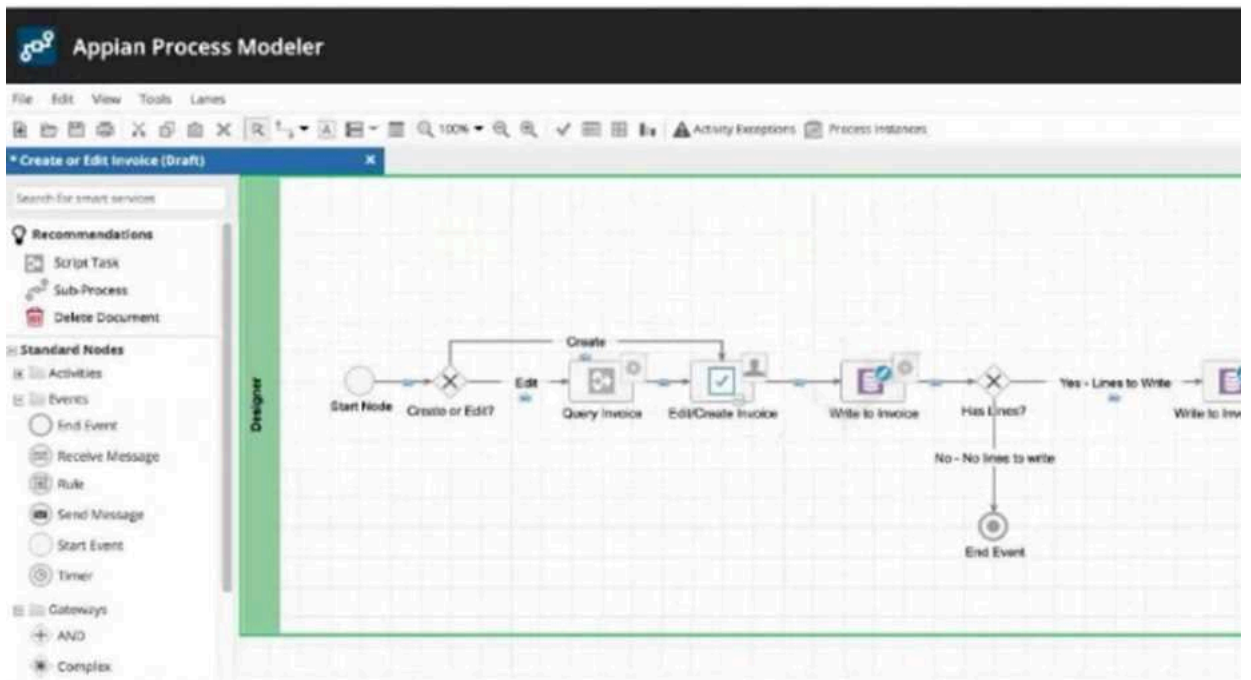
D. @AssociationOverrides

Answer(s): A

19. You are on a project where the goal is to use Appian Sites to create and edit invoices issued to customers.

This process model is being used as a related action, to edit an Invoice. You have already created a record for invoices.

Review the following image:



Which two suggestions regarding this process are valid? (Choose two.)

- A. We should consider adding a timer exception which skips the "Edit/Credit Invoice" node after 24 hours.
- B. We should add this process model as a related action on the Invoices record called "Edit Invoice."
- C. We should add two pages to the site, one of which is a Record List of Invoices, and the other which has this process model as a Report.
- D. To improve performance, we should consider removing activity chaining from all flows.

Answer(s): A B

20. You are about to deploy a package to another environment.

Which two statements are true? (Choose two.)

- A. It is not possible to undo changes from an import to all types of objects.
- B. It is possible to undo changes from an import to all types of objects.
- C. It is possible to import the same package multiple times.
- D. It is not possible to import the same package multiple times.

Answer(s): A C