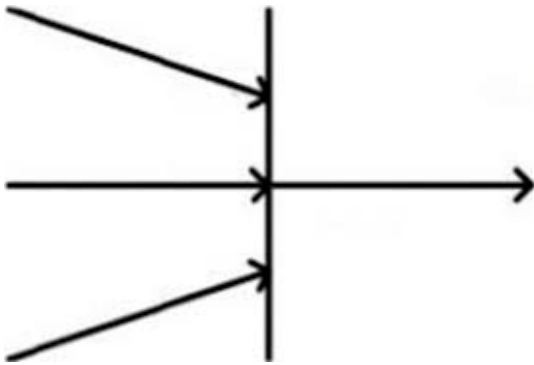


# OMG Certified UML Professional (OCUP 2) - Intermediate (Int200)

1. In the exhibit, if the incoming arrows provide three control values, how many control values are provided to the outgoing arrow?



A. none

B. one

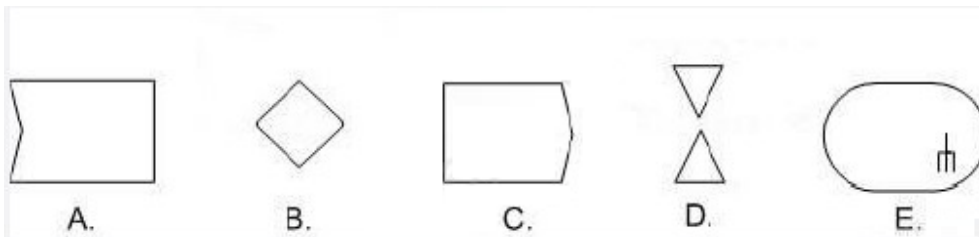
C. two

D. three

**Answer(s): B**

---

2. What symbol depicts a Call Behavior Action?



A. A

B. B

C. C

D. D

E. E

**Answer(s): E**

---

3. Which list contains only connectable elements?

A. behavior, connector end, and port

B. behavior, port and property

C. port and connector end

D. connector end, port and part

E. property, port, and parameter

**Answer(s): E**

---

4. What is true about guards on interaction operands?

A. should not refer to any dynamic variables, i.e., to attributes of the lifelines

B. must only cover one lifeline, namely the one lifeline having the first event occurrence of the interaction operand

C. must always cover all lifelines covered by the operand

D. must cover the same lifelines on all interaction operands within one combined fragment

**Answer(s): B**

---

5. What indicates an artifact instance in UML notation? (Choose two.)

A. single sheet icon with a folder-over corner

B. syntactically well-formed file name

C. class box with two smaller rectangles on its left side

D. memo box

E. <> keyword

**Answer(s): A E**

---

**6. What statements are true about a composite structure? (Choose two.)**

A. Destroying an instance of a structured classifier normally destroys instances of its parts.

B. Structured classifiers cannot contain instances of structured classifiers.

C. The behavior of a structured classifier must be completely defined through the collaboration of owned or referenced instances.

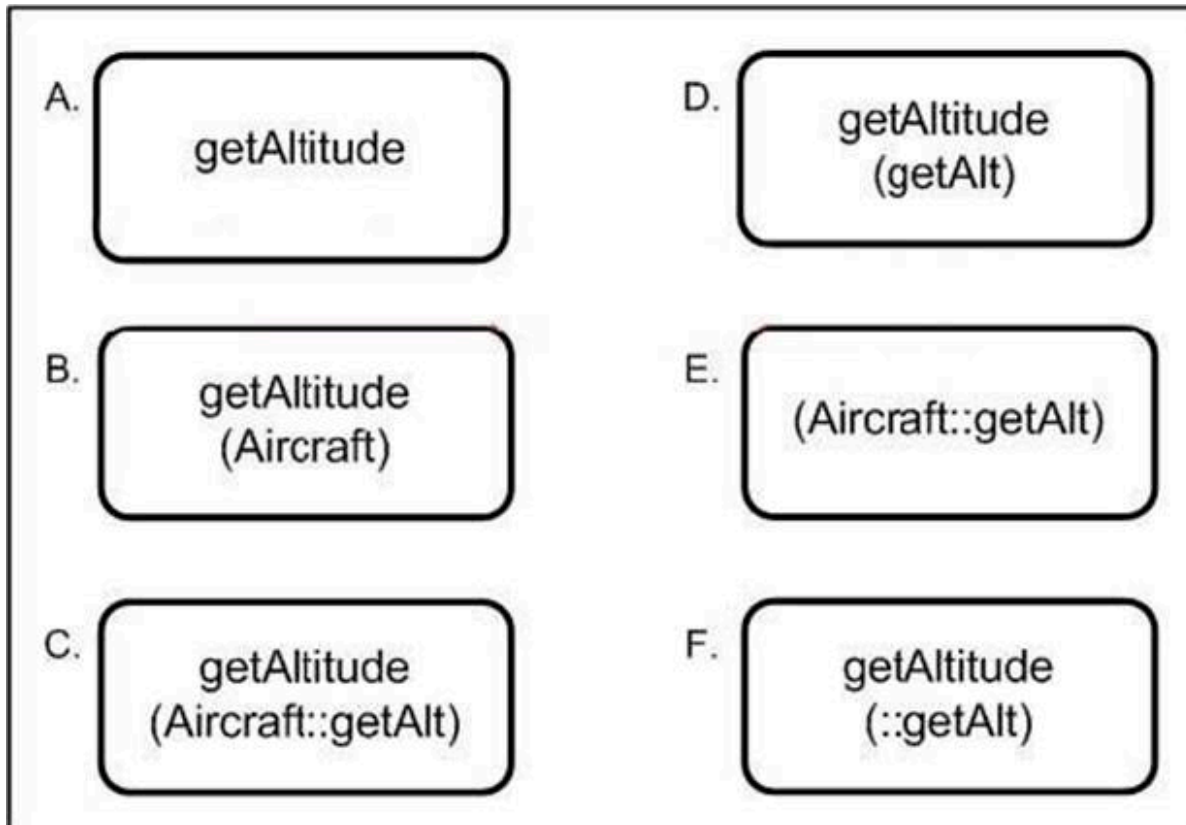
D. Collaborations are structured classifier.

E. A structured classifier is also an encapsulated classifier.

**Answer(s): A D**

---

7. What are valid representations of a Call Operation Action? (Choose two.)



A. A

B. B

C. C

D. D

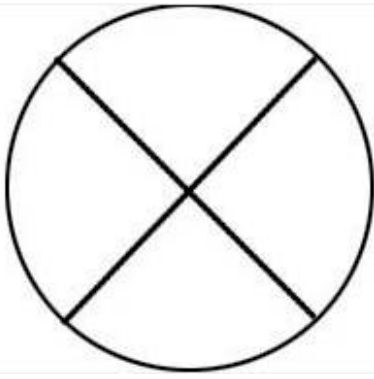
E. E

F. F

**Answer(s): C**

---

8. If the node in the exhibit receives a value, what happens to other values flowing in the diagram containing the node?



A. nothing

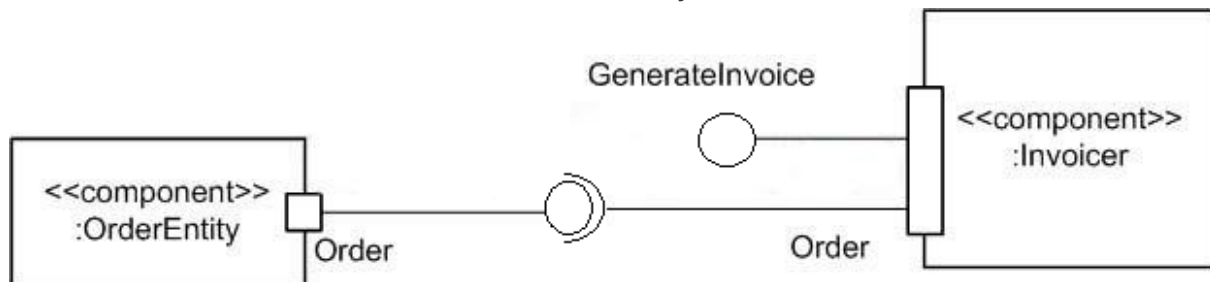
B. They stop for a time specified by the small circle.

C. They are aborted.

D. They stop until the small circle emits a value.

**Answer(s): A**

9. What best describes the semantics modeled by the exhibit?



A. The Order Entity component is part of the internals of the Invoicer component.

B. The Invoicer has a complex connector that connects the Generate Invoice interface with the Order interface.

C. This is an illegal diagram.

D. The Invoicer has a complex port that provides the interface Generate Invoice and requires the interface Order.

**Answer(s): D**

10. What types of features may a component possess?

A. attributes and operations

B. operations, but not attributes

C. neither attributes nor operations

D. attributes, but not operations

**Answer(s): A**

---

**11.** What is NOT true of a profile?

A. Applying a profile means that it is allowed, but not required to apply the stereotypes that are part of the profile.

B. A profile can be removed at any time from a model.

C. A profile can be combined with others applied on the same model.

D. Applying a profile means that it is required to apply the stereotypes that are part of the profile.

**Answer(s): C**

---

**12.** What is permitted for the profile mechanism?

A. creates new metamodels

B. removes existing metamodels

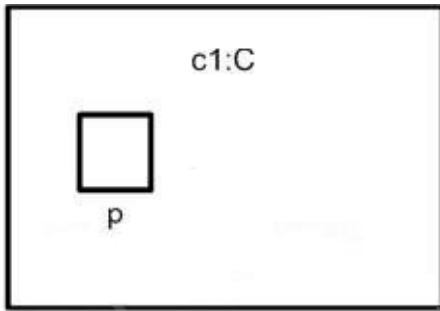
C. extends existing metamodels

D. changes existing metamodels

**Answer(s): C**

---

13. What does the composite structure notation in the exhibit show?



A. p is a port on a part of C, which is not shown.

B. p is a behavior port of C.

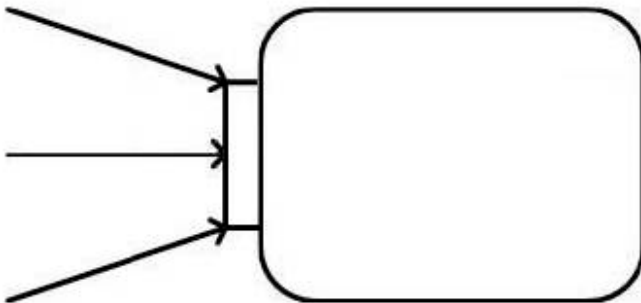
C. p is a hidden port of

D. p is a port providing a system service.

**Answer(s): C**

---

14. In the exhibit, if all incoming arrows provide the same value, how many values does the pin have?



A. three.

B. two

C. one

D. none

**Answer(s): A**

---

15. Which must be true in order to use a delegation connector to connect two components?

A. The components must be related to each other via a dependency.

B. One component must be part of the internal realization of the other component.

C. The components must have complex ports.

D. One component must be a subtype of the other.

**Answer(s): B**

---

16. What is NOT a purpose of a port owned by a classifier?

A. server as an end point for connectors

B. hides the internals of that classifier from other classifiers

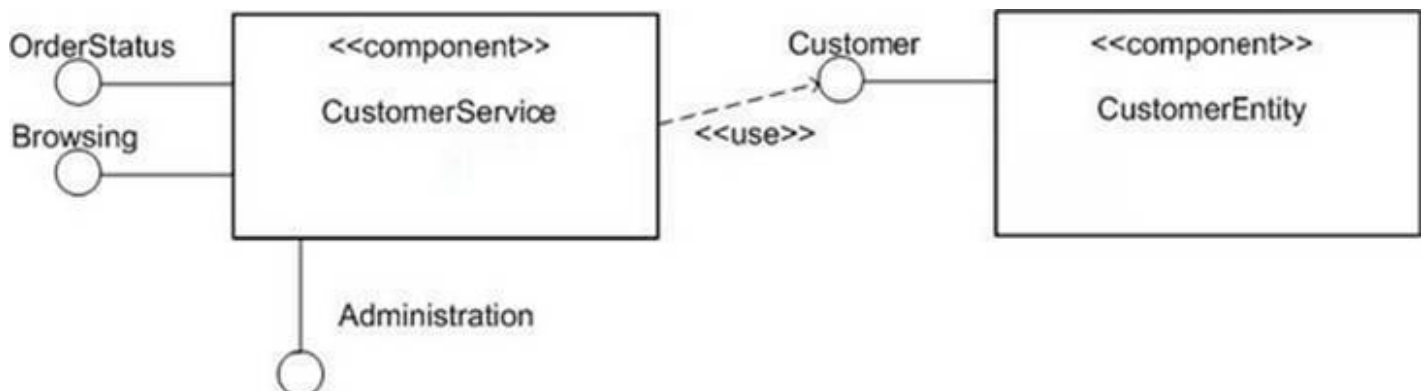
C. provides a distinct point of interaction between the classifier and its environment

D. specifies an association to the classifier

**Answer(s): D**

---

17. Refer to the exhibit.



How many interfaces does the Customer Service component make visible to its clients?

A. 3

B. 1

C. 0



D. 4

E. 2

**Answer(s): A**

---

**18.** What does it mean when message m is ignored in a combined fragment?

A. Nothing happens within the fragment until m appears.

B. Message m appears only in illegal traces of the fragment.

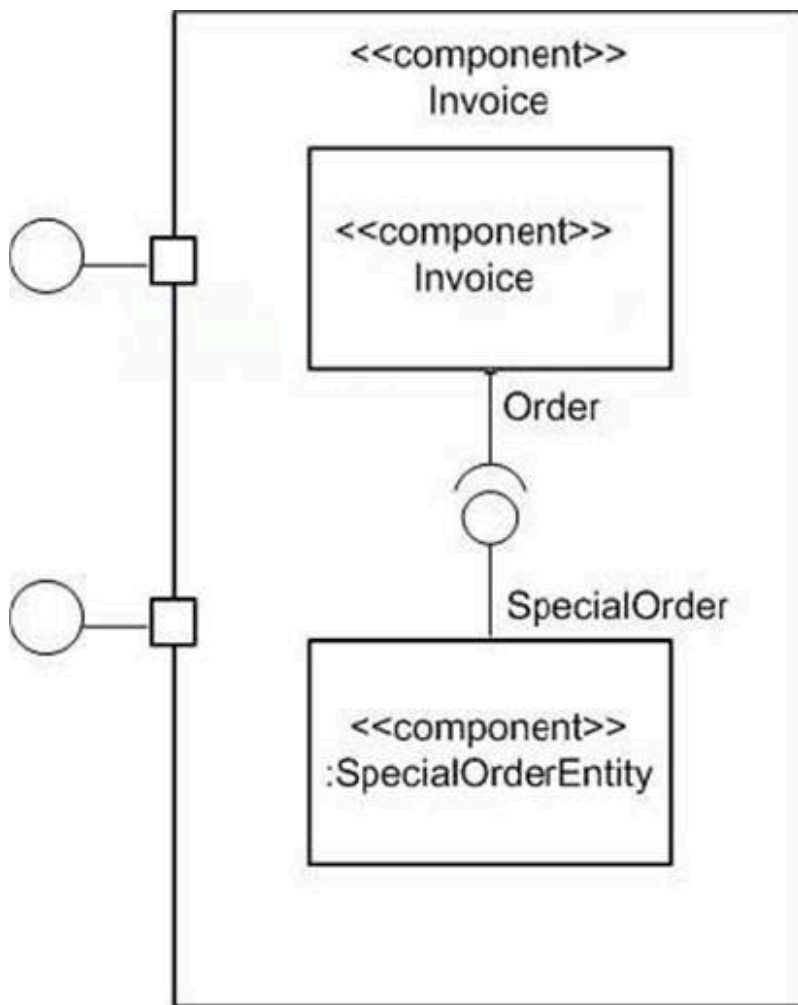
C. If m happens, the system should abort.

D. One or more m messages may appear at any point within the fragment.

**Answer(s): D**

---

**19.** Refer to the exhibit. Invoicer and Special Order Entity are each preceded by a colon symbol, because they name what type of component?



A. parts of an instance level collaboration

B. connection types

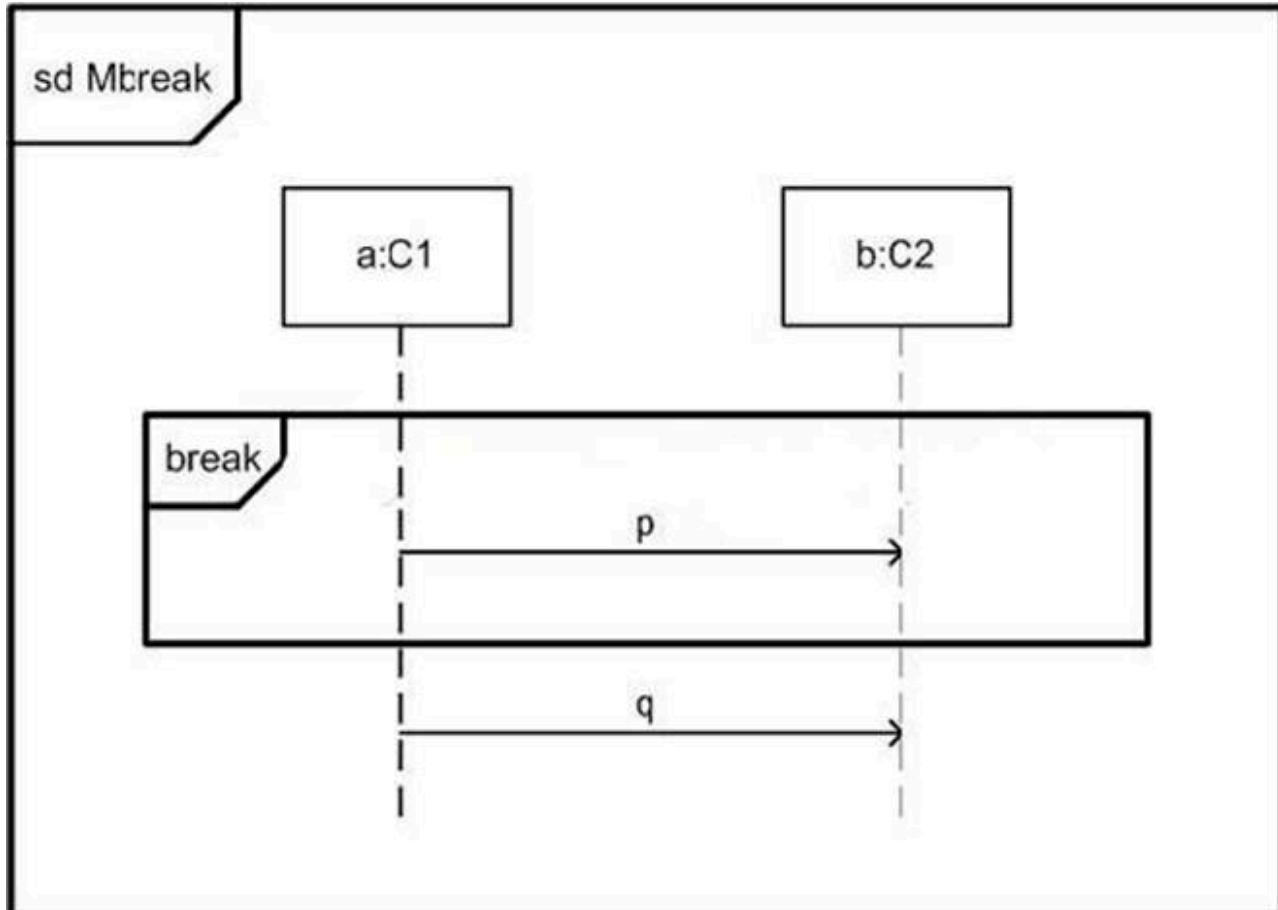
C. delegation types

D. assembly connectors

**Answer(s): A**

---

20. In the exhibit, what is true about Mbreak?



A. Either p or q appears in a trace, but not both.

B. p appears in all traces.

C. q appears in all traces.

D. Both p and q appear in all traces.

Answer(s): A

---