

UiPath Advanced RPA Associate

1. At indication time, the Strict Selector has the following functionalities available:

A. Open in UiExplorer, Copy to clipboard, Show all matches.

B. Refresh, Open in UiExplorer, Copy to clipboard.

C. Accuracy, Open in UiExplorer, Copy to clipboard, Show all matches.

D. Ignore text, Copy to clipboard, Show all matches.

Answer(s): C

2. A developer has created a string array variable as shown below:

```
UserNames = {"Jane", "Jack", "Jill", "John"}
```

Which expression should the developer use in a Log Message activity to print the elements of the array separated by the string ", "?

A. `String.Join(UserNames, ",")`

B. `String.Join(", ", UserNames)`

C. `String.Concat(UserNames, ",")`

D. `String.Concat(", ", UserNames)`

Answer(s): B

3. What is the default URL of the OCR server that runs the Computer Vision service?

A. `https://server.uipath.com/`

B. `https://cvserver.uipath.com/`

C. `https://cv.uipath.com/`

D. `https://computervision.uipath.com/`

Answer(s): C

4. What advantages do pre-built connectors in UiPath Integration Service offer?

A. Reducing the need for UI and API automation, allowing developers to work exclusively B. with connectors.

B. Simplified integration with popular applications, faster deployment, and integration across all UiPath Platform product solutions.

C. Providing a fully customizable catalog of connectors for developing proprietary applications.

D. Replacing all types of authorization and authentication protocols with a single, standardized method.

Answer(s): B

5. Which LINQ method is used to filter data in a List or Data Table based on a condition?

A. OrderBy

B. Where

C. GroupBy

D. Select

Answer(s): B

6. Which activity can be used to transition a Background Process to Foreground?

A. Use Foreground

B. Activate

C. Maximize Window

D. Set Focus

Answer(s): A

7. When configuring the Max # of retries for the queue in Orchestrator to "1" for your process, and the queue has 5 transaction items. At runtime, the first transaction item throws a Business Rule Exception. How does the process proceed?

A. Transaction is not retried and the process stops.

B. Transaction is not retried but remaining transactions continue processing.

C. Transaction is retried only one time.

D. Transaction is retried multiple times until processed successfully.

Answer(s): B

8. A developer has created a variable of type List of Strings named "UsersList", and initialized it with an empty list: "UsersList = new List(Of String)".

What is printed in the log message after the following Invoke Code is executed?

The screenshot shows the 'Invoke Code' activity in UiPath Studio. The code inside the activity is:

```
Users_List.Add("User1")
Users_List.Add("User2")
```

Below the code, there are two buttons: 'Edit Code' and 'Edit Arguments'. An arrow points from the 'Invoke Code' activity to the 'Log Message' activity. The 'Log Message' activity has a 'Log Level' dropdown set to 'Info' and a 'Message' field containing the text 'Users List.Count'.

At the top of the image, there is a table titled 'Invoked code arguments' with the following data:

Name	Direction	Type	Value
Users_List	In	List<String>	Users_List

Below the table, there is a button labeled 'Create Argument'.

A. 0

B. 2

C. Object reference not set to an instance exception is thrown

D. System Argument Exception is thrown

Answer(s): A

9. What are the components that define a state within a State Machine in UiPath Studio?

A. Activities, Connectors, and Annotations.

B. Input Arguments, Output Arguments, and Variables.

C. Sequence, Flowchart, and Transactional Business Process.

D. Entry, Exit, and Transition Actions with Trigger Conditions.

Answer(s): D

10. Starting with UiPath Studio version 2022.10, what happens to dependencies that lack Windows compatibility when they are converted in a project?

A. They are replaced with compatible alternatives.

B. They are removed from the project.

C. They are marked as unresolved.

D. They are automatically resolved.

Answer(s): C

11. A developer defines new log fields using the Add Log Fields activity. When will the custom log fields stop being added to the robot execution logs?

A. When an Exception is caught and handled.

B. When a Remove Log Fields activity is used to remove them.

C. When a Log Message activity is executed with Log Level = Warn or higher.

D. When the first Log Message activity is executed.

Answer(s): B

12. What is the purpose of the Interval filter in the Orchestrator's Monitoring page?

A. It allows you to control the granularity of the displayed data and check the health of your system in either the last day or the last hour.

B. It allows you to allocate licenses per machine for the displayed data.

C. It allows you to choose between background and foreground processes for the displayed data.

D. It enables you to sort the displayed data based on job priorities.

Answer(s): A

13. What status needs to be selected in the Set Transaction Status activity in UiPath Studio so that the respective Queue Item will be retried?

A. Failed

B. Retried

C. Abandoned

D. Postponed

Answer(s): A

14. Considering that the attached table is stored in a variable called "dt".

	A	B	C
1	No.	Item	Quantity
2		1 apple	10
3		2 orange	20
4		3 mango	5
5		4 kiwi	80
6		5 pear	1
7		6 apple	5
8		7 apple	12
9		8 mango	15

Which LINQ query can be used to return the maximum total Quantity?

A. `dt.AsEnumerable(). GroupBy(Function(x)x("Item"). ToString()). Max(Function(x)x.Sum(Function(y) Convert.ToInt32(y("Quantity"). ToString)))`

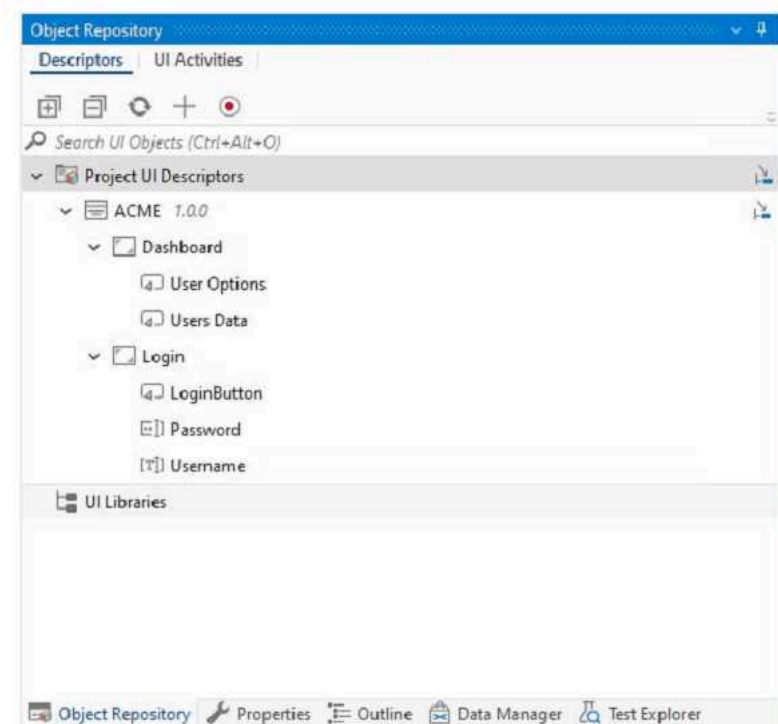
B. `dt.AsEnumerable(). Max(Function(x) Convert. ToInt32(x("Quantity"). ToString))`

C. `dt.AsEnumerable(). Max(Function(x) Convert.ToInt32(x("Quantity"). ToString))("Item")`

D. `dt.AsEnumerable(). OrderByDescending(Function(x) Convert. ToInt32(x("Quantity"). ToString)). First.Item("Quantity")`

Answer(s): A

15. Which of the following options is correct regarding the below Object Repository tree structure?



A. One ScreenTwo ApplicationsFive UI Elements

B. One ApplicationTwo UI ElementsFive Screens

C. One LibraryOne ApplicationTwo ScreensFive UI Elements

D. One ApplicationTwo ScreensFive UI Elements

Answer(s): D

16. Which activity should a developer use to add custom information to logs related to transactions for tracing purposes?

A. Add Log Fields

B. Update Logs

C. Add Custom Log

D. Build Log

Answer(s): A

17. In the Robotic Enterprise (RE) Framework, at which point should a developer log a clear message with the Logging Level set to "Information," adhering to the best practices for automating a production-level process?

A. Whenever an argument or value is used.

B. Whenever data is fetched from external sources.

C. Whenever an exception is caught in a Catch block.

D. Whenever the robot encounters an error on a Queue Item.

Answer(s): C

18. When automating the process of entering values into a web form, requiring each field to be brought to the foreground, which property of the Type Into activity should be adjusted to achieve this?

A. Delay before

B. Activate

C. Selector

D. Input Element

Answer(s): B

19. Which logging level includes the following information by default?

1. Execution Started log entry - generated every time a process is started.
2. Execution Ended log entry - generated every time a process is finalized.
3. Transaction Started log entry - generated every time a transaction item is obtained by the robot from Orchestrator.
4. Transaction Ended log entry - generated every time the robot sets the transaction status to either Success or Failed.
5. Activity Information log entry - generated every time an activity is started, faulted or finished inside a workflow.
6. Arguments and Variables Information log entry - show values of the variables and arguments that are used.

A. Critical

B. Trace

C. Verbose

D. Information

Answer(s): C

20. What is the use of job priorities in unattended automations within UiPath Orchestrator?

A. To determine which processes should be executed first when dealing with multiple jobs.

B. To sort and organize tasks within a folder.

C. To create job dependencies that must be completed before new job execution.

D. To determine machine resource allocation among processes.

Answer(s): A
